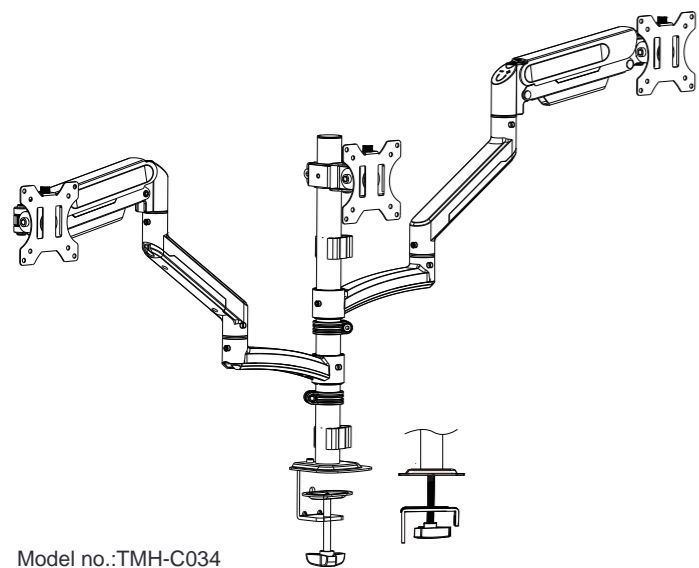
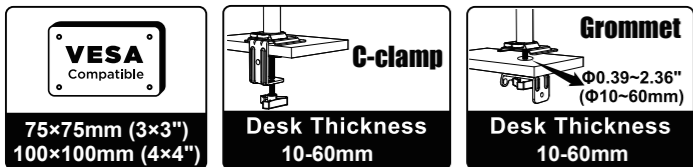
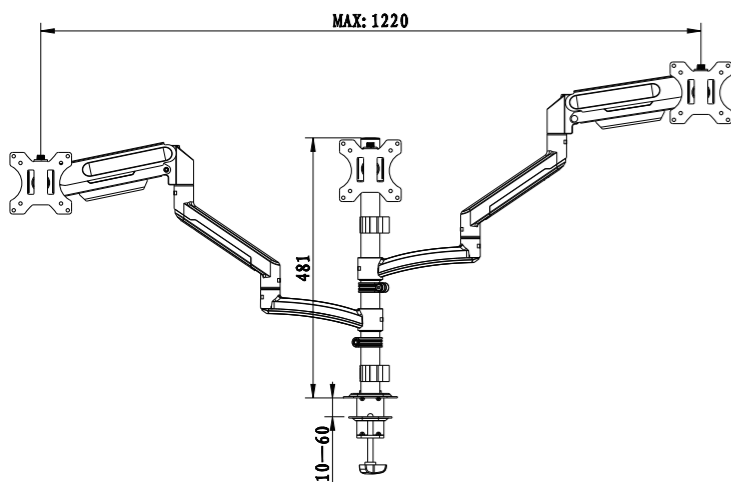


INSTALLATION INSTRUCTION

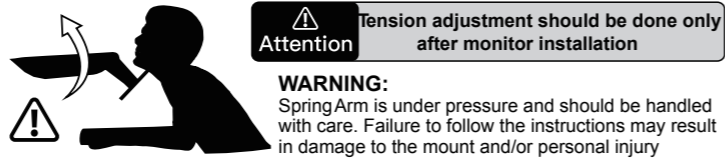


Model no.:TMH-C034
 Fit for screen size:15"-32"
 VESA:100x100mm
 Max loading weight:2-10kgs

Product Dimensions



Safety Caution



BEFORE ASSEMBLY

- Please check and make sure all necessary accessories are included and undamaged. If any parts are missing or damaged, do not return the damaged item to your dealer; contact Customer Service. Never use damaged parts.
- Please read and understand this manual carefully before installation.

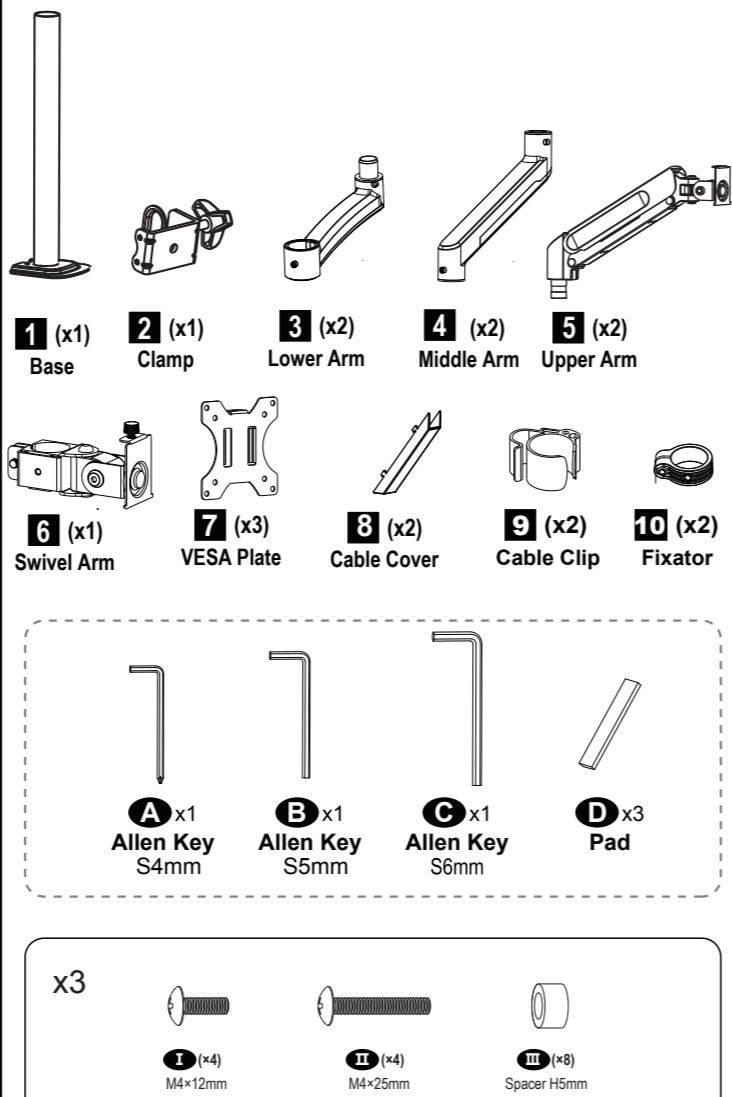
WARNING

- This product contains small items that could be a choking hazard if swallowed. KEEP AWAY FROM CHILDREN UNDER 3 YEARS OLD. ADULT SUPERVISION IS REQUIRED.
- Improper installation, such as using the product for monitor over its load capacity or for any purpose not explicitly specified, may cause damage or serious injury. We would not be liable for any damage or injury caused by improper mounting or inappropriate use.

CAUTION AND MAINTENANCE

- Never allow children to climb, stand, hang, or play on any part of monitor or stand.
- This product is intended for indoor use only. Using this product outdoors could lead to product failure and personal injury.
- Check that the bracket is secure and safe to use at regular intervals (at least every three months).

Supplied Parts and Hardware



NOTE: Not all parts and hardware included will be used.

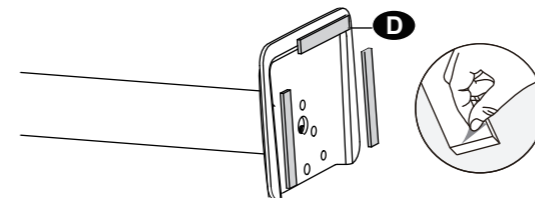
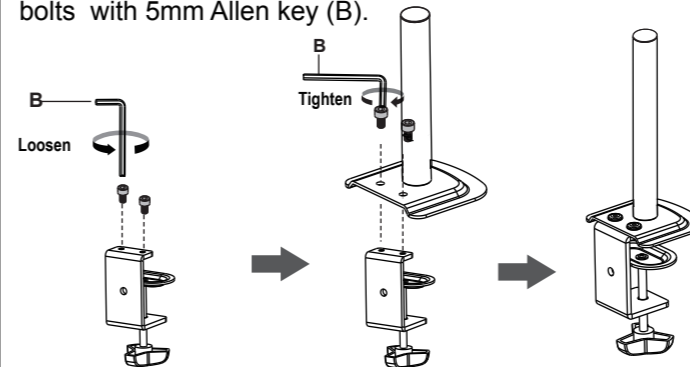
1-A Base Installation

OPTION A: Clamp Installation



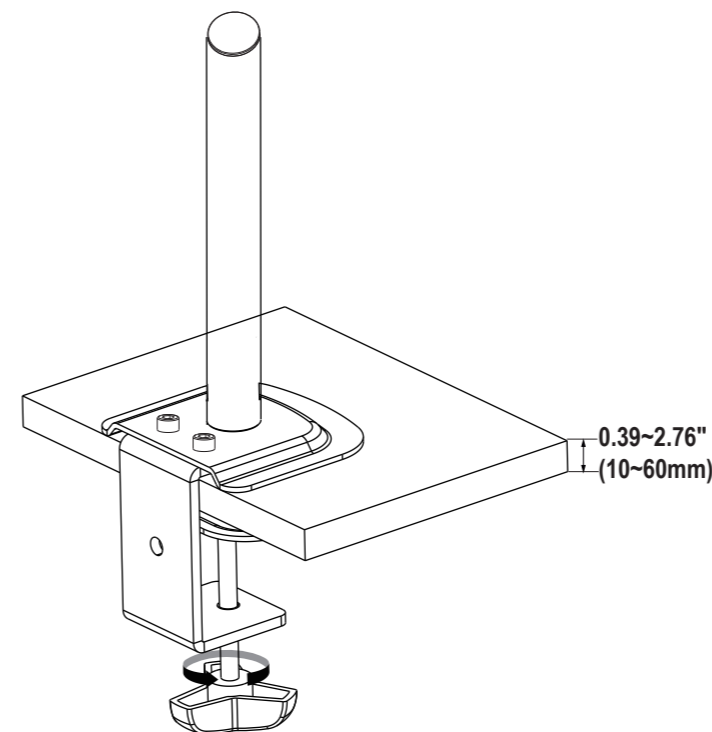
A-1

Mount clamp (2) to the bottom of base (1) by tightening bolts with 5mm Allen key (B).



A-2

Secure stand to the desktop by tightening clamp (F).

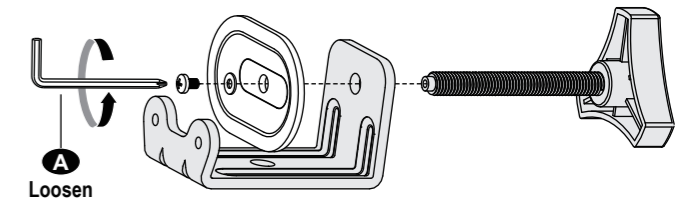


1-B Base Installation

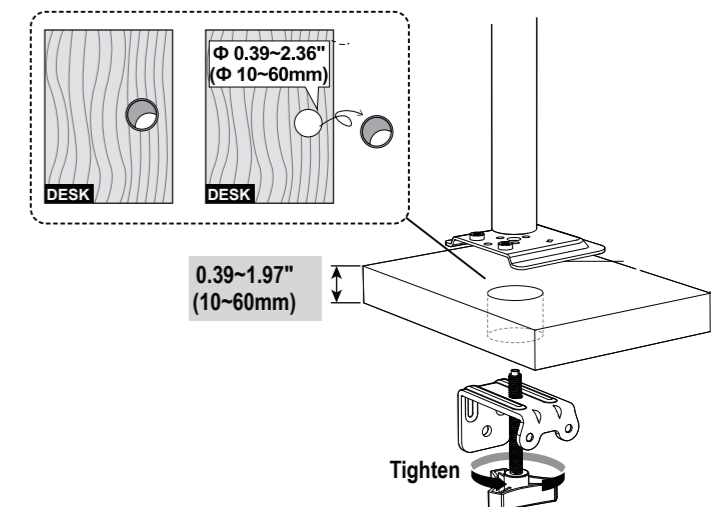
OPTION B: Grommet Base Installation



B-1 Detach the bracket and knob bolt from clamp(2) by using 4mm Allen key(A).

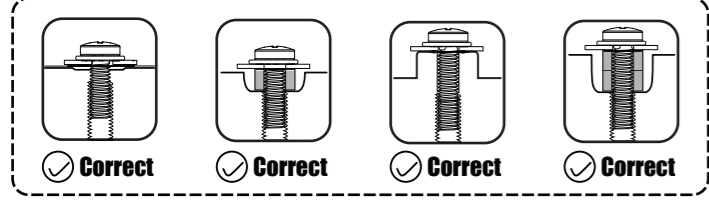
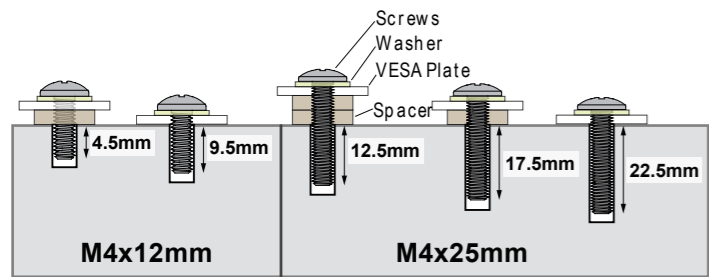


B-2 Run knob bolt through the bracket and the grommet hole to base bottom.



2 Attach VESA Plate to Monitor

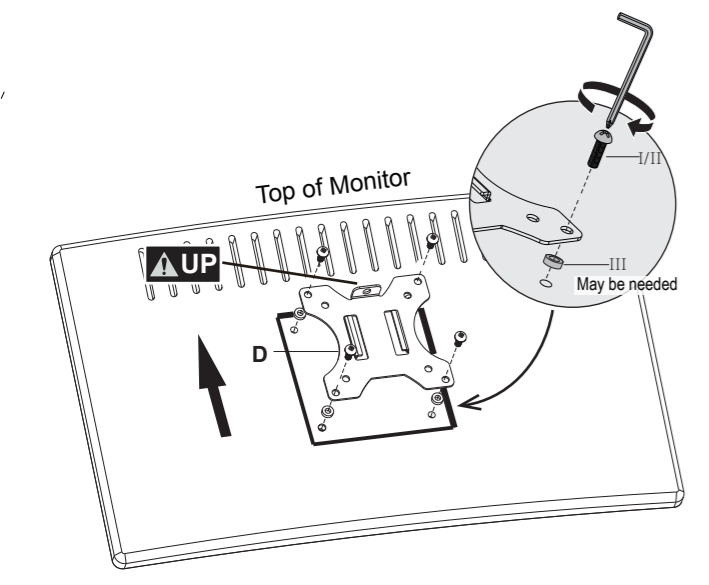
2-1 Select Correct Monitor Screw Length



Which Situation Needs Spacers?
If the screw is too long or the surface is uneven, please choose the appropriate screws and spacers for your monitor.

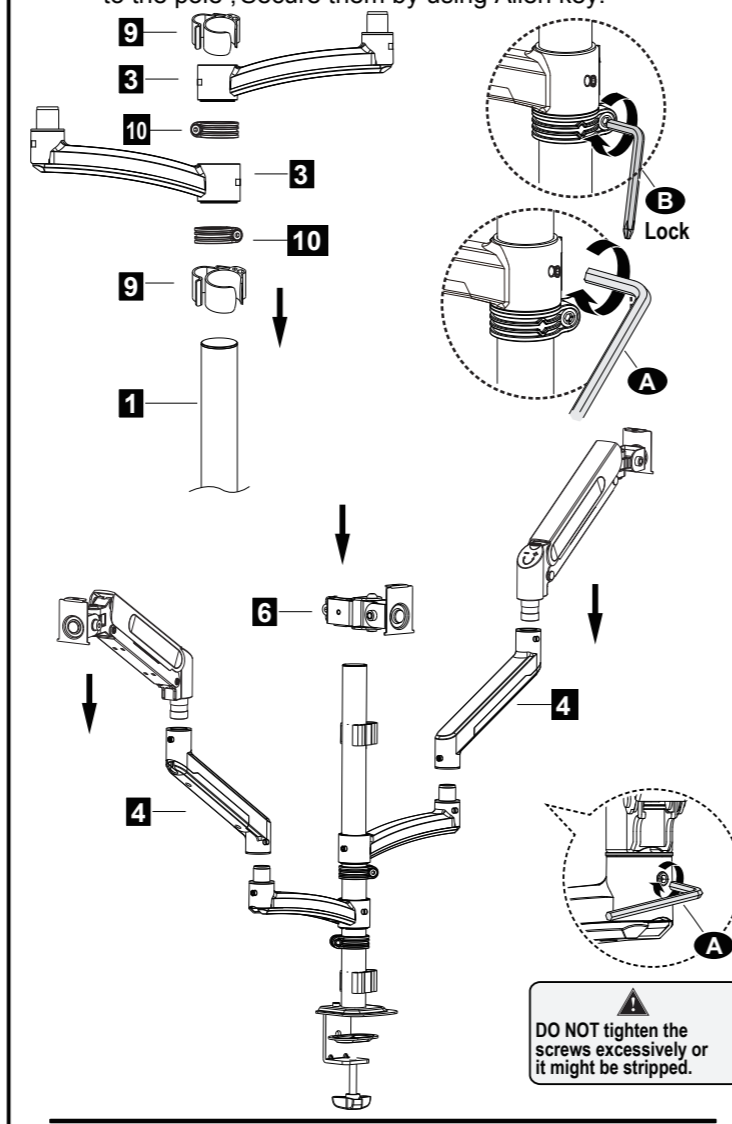
2-2 Attach VESA Plate to TV

Do not tighten the screws excessively or tighten them by using the Electrodrill, or your monitor might be damaged.

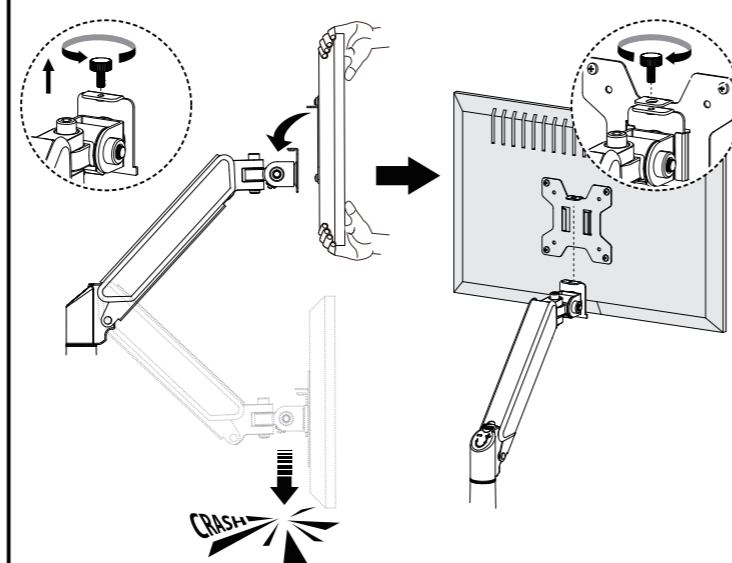


3 Arm and Monitor Installation

3-1 1. Install the cable clip, fixator and arm to the pole, Secure them by using Allen key.



3-2 Slide the monitor onto the head of upper arm (5), then install the security bolt. Make sure the security bolt is installed before you rotate the monitor.

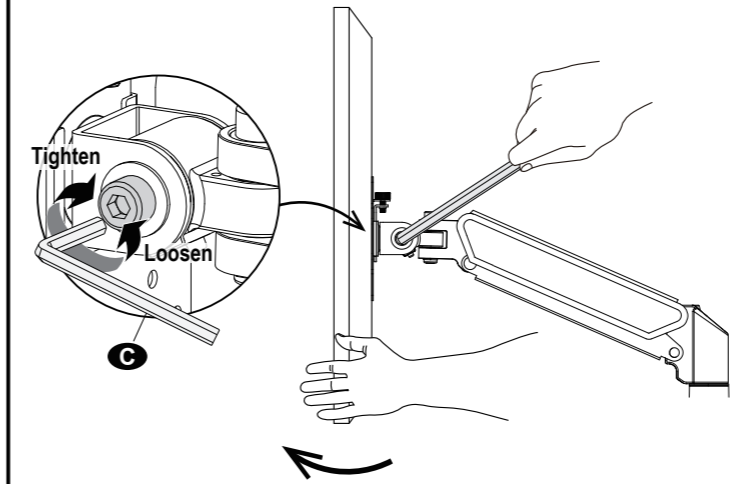


Important Notice:
The gas spring is pre-set to minimum tension. Once the monitor is hanged on, make sure that hold the monitor with both hands and DO NOT let go suddenly or immediately. Instead, leave the monitor in a slow & gentle way while observing whether the arms will fall down wildly.

4 Adjustments (If necessary)

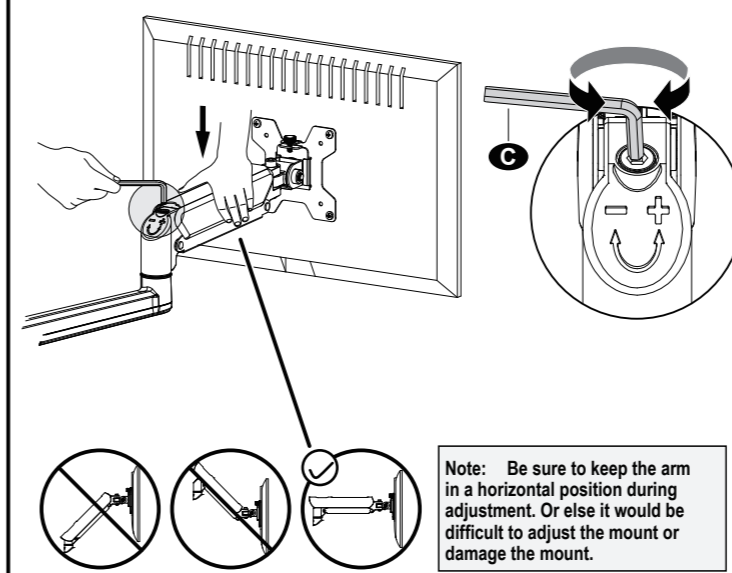
4-1 Tilt Adjustment

1. Loosen the tilting bolt.
2. Adjust monitor to your desired tilt angle.
3. Retighten the tilting bolt to fix the intended angle.



4-2 Tension Adjustment

The gas spring is pre-set to minimum tension. For intended functioning of the mount, you may need to adjust the tension of arm in accordance with your monitor weight by 6mm Allen key (C).

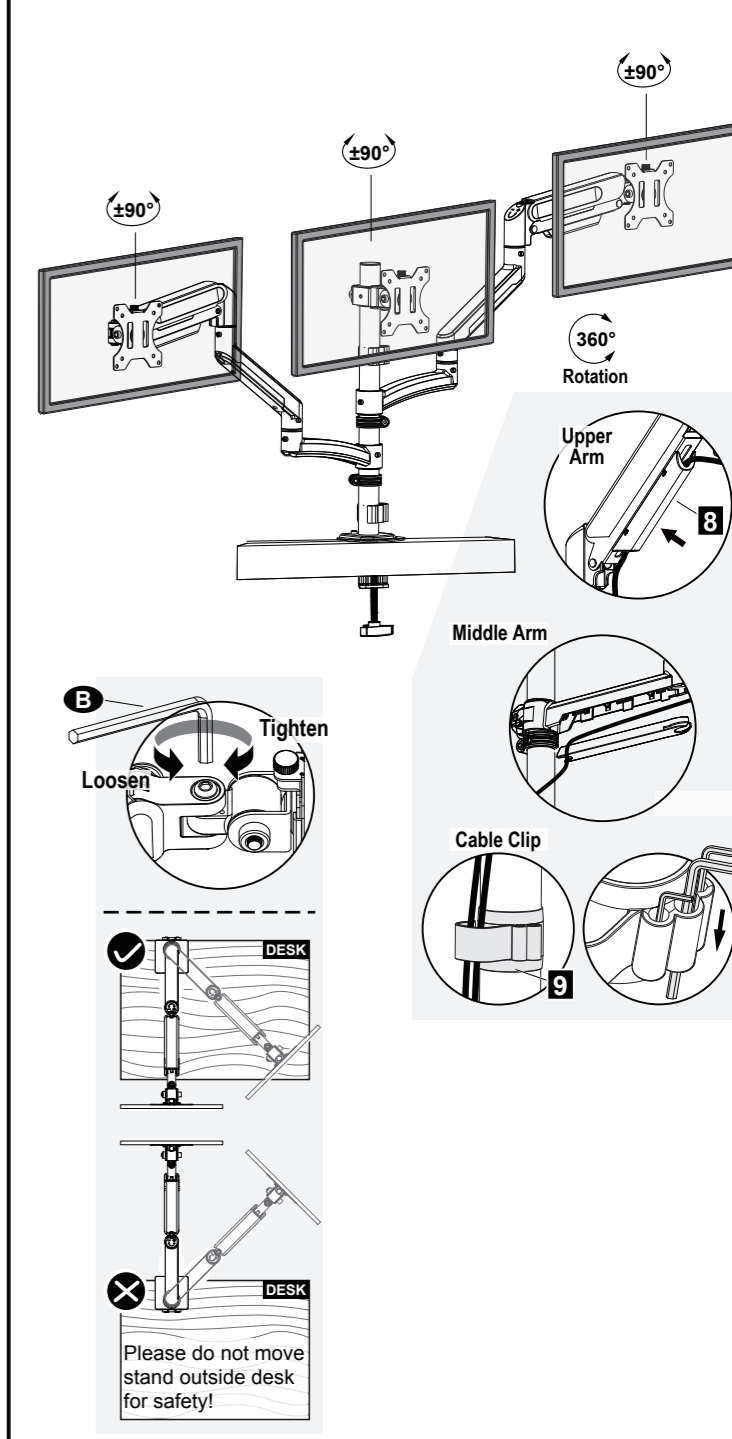


Situation 1: Arm falls down
Upper Arm with monitor falls down and fails to stay where intended.
Solution: Turn the inside screw counterclockwise ("+" direction) to increase gas spring tension until the arm can stay as intended.

Situation 2: Arm rises up or can't press down
Upper Arm with monitor rises up and fails to stay where intended.
Solution: Turn the inside screw clockwise ("-" direction) to decrease gas spring tension until the arm can stay as intended.

5 Cable Management

5 Adjust monitor position and rotation.



Rotate Vigorously
NOTE: To ensure stability, the tightness of the rotating axis has been preset, so it would be kind of difficult to rotate the VESA plate.
Suggestion: Please attach the monitor first, then hold the sides of it with both hands, and rotate vigorously. If that doesn't work out, please do not hesitate to ask for our help.