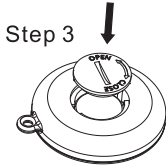
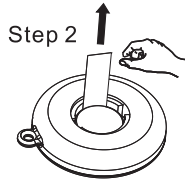
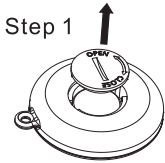
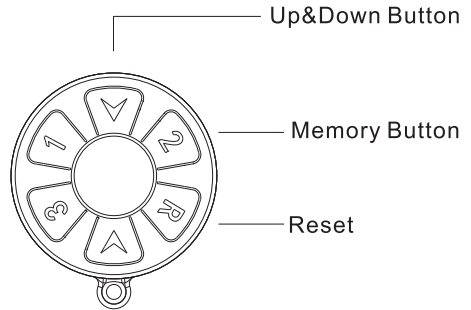


Tips On Remote Control



Note:
Take out
insulated film.



Tips: How to connect remote control with operation interface

<p>Control Panel</p>	<p>How to set remote control : First Press both buttons of S and O for two seconds until M flashes on display panel, then press ▲ or ▼ on the remote control, lastly press ▲ or ▼ on the control panel, now you've set the function of the keys on the remote control.(Keep the display panel at memory surface , refer to instructions for detailed process.)</p>
<p>Control Panel</p>	<p>How to set remote control : First press both buttons of ▲ and ▼ for two seconds until code C884 shown on display panel, then press any button on the remote control until the code flashes, which means the connection is done, Lastly, press any button on the control panel to exit the setting. (Refer to instructions for detailed process)</p>

<p>Height adjustment</p>	<p>Cart runs upwards when “▲” is pressed, and down wards when “▼” is pressed.</p>
<p>Memory setting</p>	<p>When the control panel stays at memory interface , press button 1 , 2 , or 3 on the remote control , the cart will move to the pre-set height accordingly.</p>
<p>Reset</p>	<p>Press button R for two seconds , the cart starts to initialize.</p>

Tips:

- Remote control might fail to work when a mixed use of old and new batteries or different types of batteries.
- Don't throw remote control casually ,No liquid in ,No direct sunshine, keep away from heat.
- Take out batteries when remote control is not used for a long period of time.
- If remote control does not work, try to take out batteries and put them in 30 seconds later, or, Use new batteries.
- Operate remote control within 5 meters away from cart ,No obstacles between cart .